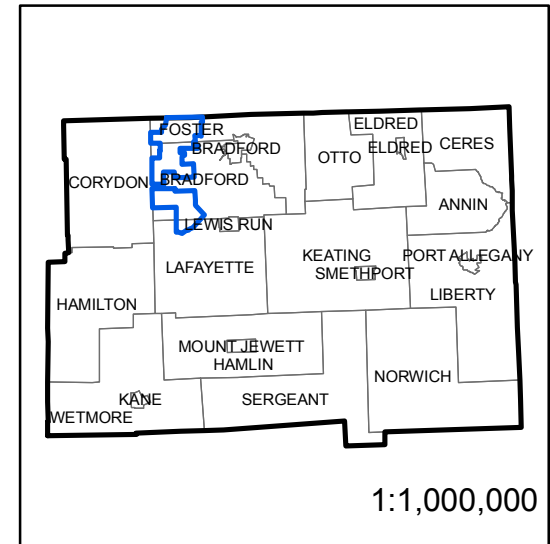
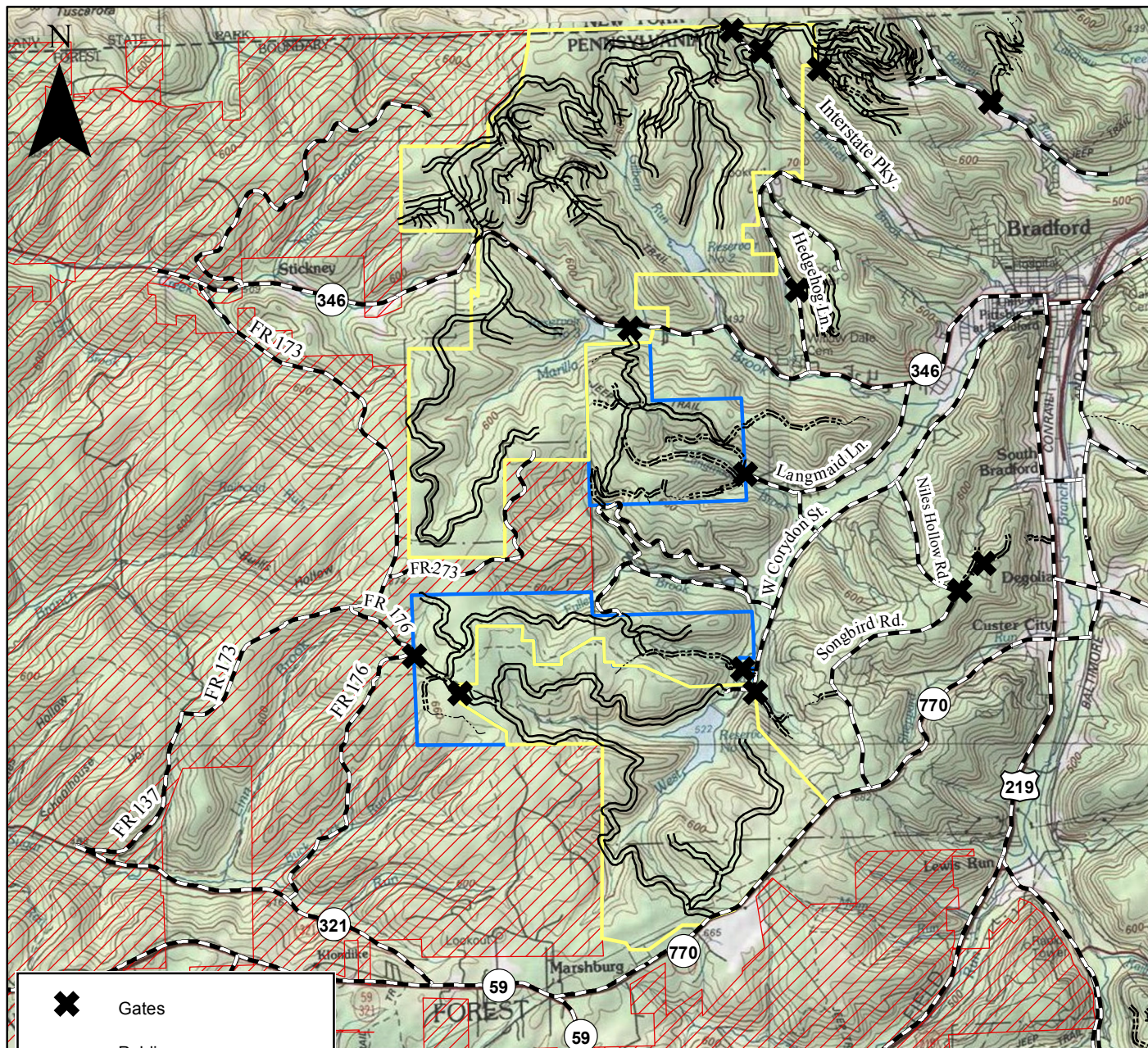


DMAP Unit 1996



- DMAP Unit 1996
- McKean Townships
- McKean County



- ✕ Gates
- Public
- Primary
- Secondary
- Closed
- Bradford Water Authority
- Collins Pine Company
- Allegheny National Forest

0 1 2 3 4
Miles

DMAP Unit 1996 consists of Bradford Water Authority properties and Collins Pine Company properties. The shared boundary with the Forest Service contains a permanent Forest Service sign every 300 feet and is marked with blue/yellow/red blazes. Bradford Water Authority property is bounded by yellow blazes and Collins Pine is bounded by blue blazes. The New York State Line is bounded by red blazes. The DMAP area DOES NOT exceed these limits. Entire property is forested and open to hunting.